

Drumi mi yuchi

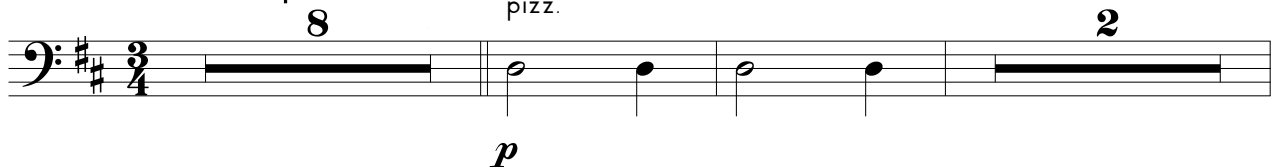
Contrabass

arr. Dirk Kokx

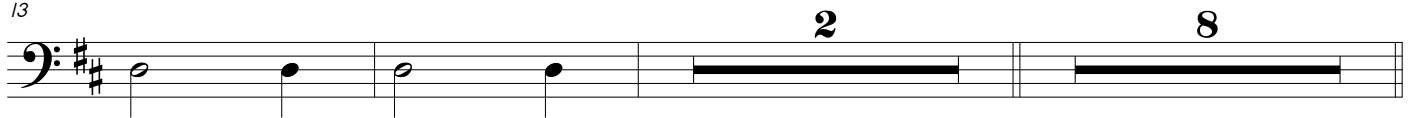
Lullaby
Kinderen spelen



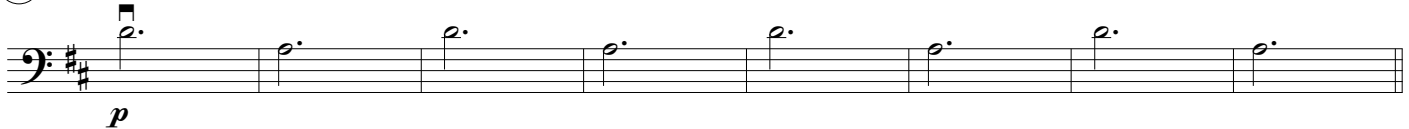
pizz.



13



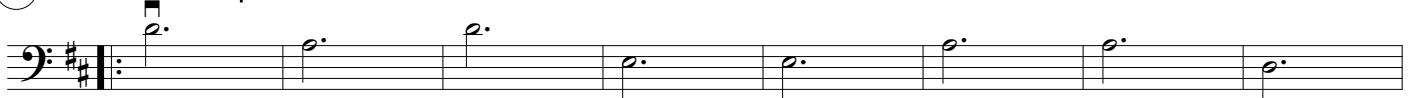
(A) Voorspel docenten



Drumi mi yuchi, sera bo wowo. Drumi mi yuchi, sera bo wowo.
Dia a kaba, nochi t'ei bin. Laga e soño bini awor.
Hopi ba huga, kansa bo kurpa. Papai i mami tur dos stimabu.
Yuda bo mama, kansa papai. I lo kuidabu, drumi trankil.

Drumi mi yuchi, soña mi yuchi,
ketu mi yuchi, dia a bai.
Drumi mi yuchi, soña mi yuchi,
ketu mi yuchi, soño a bin.

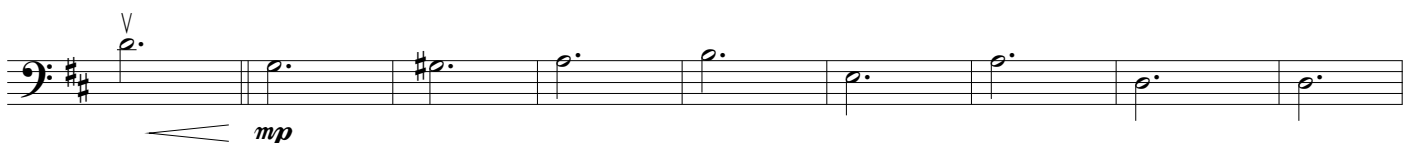
(B) Kinderen zingen
Docenten spelen



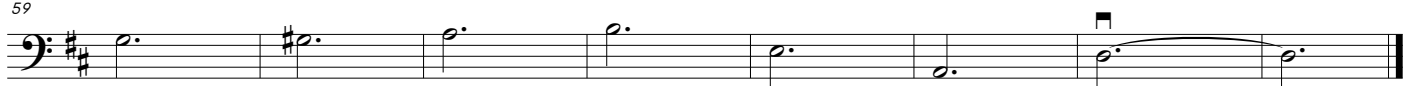
41



(C)



59



© 2017

Leerorkest Expertisecentrum